

LOT 5 REGISTERED PLAN 109
(WIDENING BY DEPOSITED PLAN 1192, P-2379-4)

I REQUIRE THIS PLAN TO BE DEPOSITED UNDER THE LAND TITLES ACT.
DATE... JANUARY 22, 2025...
TRISHA SNOW, O.L.S.
PLAN 3R-10963
RECEIVED AND DEPOSITED
DATE January 24, 2025
"Jennifer Verrell"
REPRESENTATIVE FOR LAND REGISTRAR FOR THE LAND TITLES DIVISION OF BRUCE (No. 3)

SCHEDULE

PART	LOT	PLAN	PIN
1	PART OF 6	3M-220	PART OF 33293-0784 (LT)
2	PART OF 6	3M-220	PART OF 33293-0784 (LT)
3	PART OF 6	3M-220	PART OF 33293-0784 (LT)
4	PART OF 6	3M-220	PART OF 33293-0784 (LT)
5	PART OF 6	3M-220	PART OF 33293-0784 (LT)
6	PART OF 6	3M-220	PART OF 33293-0784 (LT)
7	PART OF 6	3M-220	PART OF 33293-0784 (LT)
8	PART OF 6	3M-220	PART OF 33293-0784 (LT)
9	PART OF 6	3M-220	PART OF 33293-0784 (LT)
10	PART OF 6	3M-220	PART OF 33293-0784 (LT)
11	PART OF 6	3M-220	PART OF 33293-0784 (LT)
12	PART OF 6	3M-220	PART OF 33293-0784 (LT)
13	PART OF 6	3M-220	PART OF 33293-0784 (LT)
14	PART OF 6	3M-220	PART OF 33293-0784 (LT)

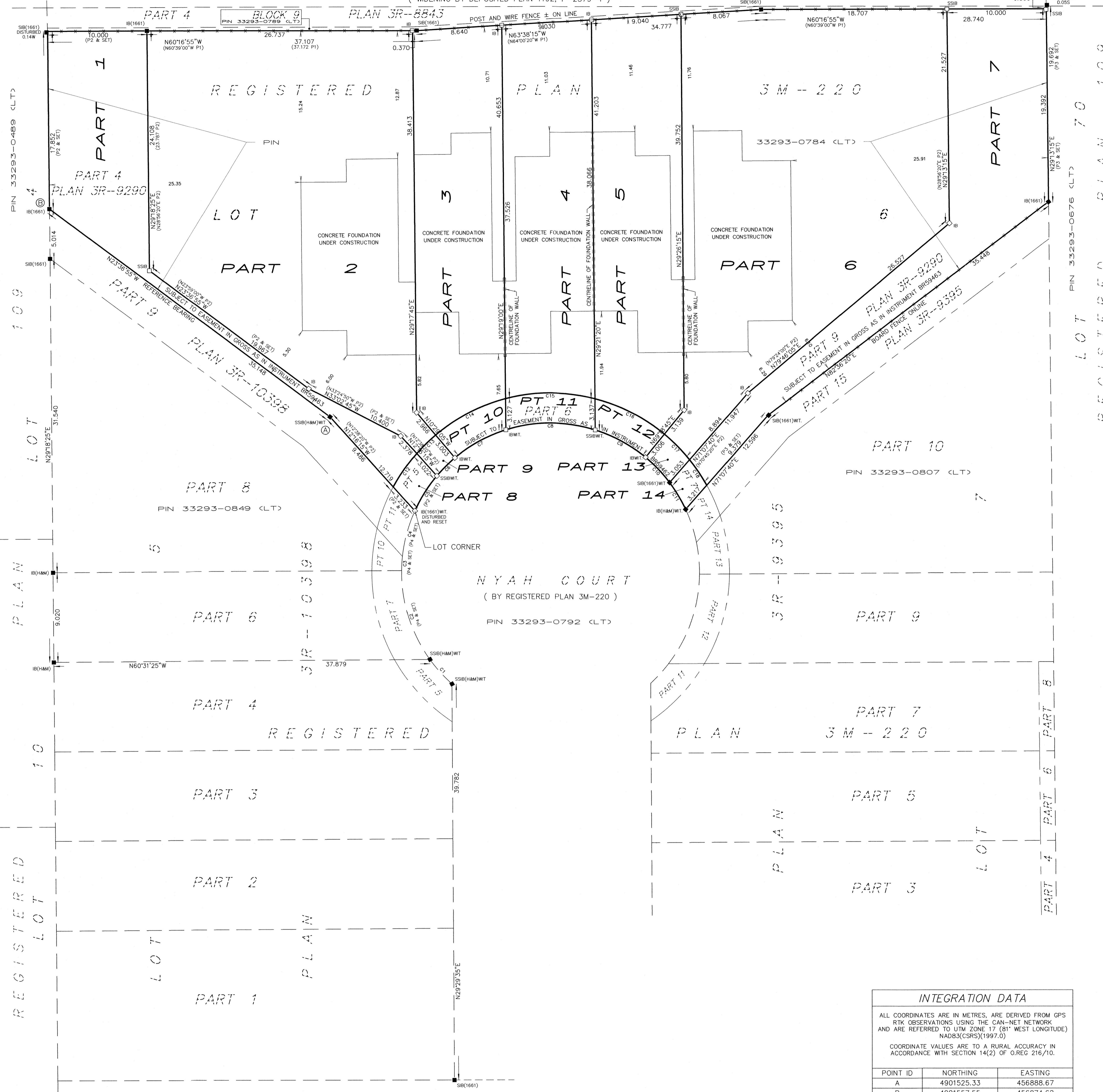
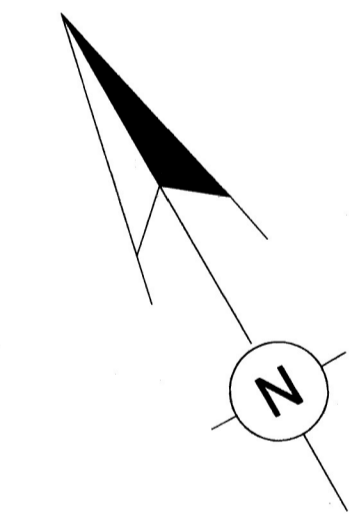
THIS PLAN IS COMPRISED OF ALL OF PIN 33293-0784(LT)
PARTS 1, 7, 8, & 14 ARE SUBJECT TO EASEMENT IN GROSS AS IN INSTRUMENT BR59463
PARTS 8 TO 14 ARE SUBJECT TO EASEMENT IN GROSS AS IN INSTRUMENT BR59462

PLAN OF SURVEY
OF ALL OF
LOT 6
REGISTERED PLAN 3M-220
GEOGRAPHIC VILLAGE OF TIVERTON
MUNICIPALITY OF KINCARDINE
COUNTY OF BRUCE

HEWETT & MILNE LIMITED
SCALE - 1 : 200
0 2 10 20 METRES
2025

- LEGEND
- DENOTES SURVEY MONUMENT FOUND
 - DENOTES SURVEY MONUMENT SET
 - SSIB DENOTES STANDARD IRON BAR
 - IB DENOTES SHORT STANDARD IRON BAR
 - WT. DENOTES WITNESS
 - H&M DENOTES HEWETT AND MILNE LTD., O.L.S.
 - 1661 DENOTES RONALD F. DORE, O.L.S.
 - P1 DENOTES REGISTERED PLAN 3M-220
 - P2 DENOTES PLAN 3R-9290
 - P3 DENOTES PLAN 3R-9395
 - P4 DENOTES PLAN 3R-10398

METRIC NOTE
DISTANCES AND COORDINATES SHOWN ON THIS PLAN ARE IN METRES AND CAN BE CONVERTED TO FEET BY DIVIDING BY 0.3048.



CURVE TABLE

CURVE	ARC	RADIUS	BEARING	CHORD
C1	3.288	15.000	N12°22'40"W	3.282
C2	9.566	15.000	N12°10'20"E	9.405
C3	1.417	15.000	N33°28'35"E	1.416
C4	4.762	15.000	N44°51'30"E	4.742
C5	4.167	15.000	N62°06'25"E	4.153
C6	2.572	15.000	N74°55'55"E	2.569
C7	5.900	15.000	N88°53'15"W	5.862
C8	9.133	15.000	N60°10'35"W	8.993
C9	5.782	15.000	N31°41'20"W	5.747
C10	3.531	15.000	N13°54'10"W	3.522
C11	3.152	15.000	N107°25'W	3.146
C12	4.113	18.000	N64°56'50"E	4.104
C13	2.664	18.000	N75°28'00"E	2.661
C14	8.012	18.000	N87°32'35"W	7.946
C15	9.091	18.000	N60°14'30"W	8.995
C16	7.905	18.000	N33°11'30"W	7.842
C17	3.617	18.000	N14°51'10"W	3.611
C18	3.105	18.000	N40°09'30"W	3.102

INTEGRATION DATA

ALL COORDINATES ARE IN METRES, ARE DERIVED FROM GPS RTK OBSERVATIONS USING THE CAN-NET NETWORK AND ARE REFERRED TO UTM ZONE 17 (81° WEST LONGITUDE) NAD83(CRS) (1997.0)

COORDINATE VALUES ARE TO A RURAL ACCURACY IN ACCORDANCE WITH SECTION 14(2) OF O.REG 216/10.

POINT ID	NORTHING	EASTING
A	4901525.33	456888.67
B	4901557.55	456874.62

CAUTION: COORDINATES CANNOT, IN THEMSELVES BE USED TO RE-ESTABLISH CORNERS OR BOUNDARIES SHOWN ON THIS PLAN

INTEGRATION NOTES

BEARINGS ARE UNIVERSAL TRANSVERSE MERCATOR (UTM) GRID, DERIVED FROM NETWORK GPS OBSERVATIONS TRANSFERRED TO MONUMENTS 'A' AND 'B' SHOWN HEREON. THE UTM GRID BEARING BETWEEN POINTS 'A' AND 'B' IS N23°36'55"W, NAD83(CRS) (1997.0), AND IS REFERRED TO THE CENTRAL MERIDIAN OF UTM ZONE 17 (81° WEST LONGITUDE)

DISTANCES SHOWN ON THIS PLAN ARE GROUND AND CAN BE CONVERTED TO GRID BY MULTIPLYING BY THE COMBINED SCALE FACTOR OF 0.99958

BEARING COMPARISONS TO REGISTERED INSTRUMENTS AND PLANS SHOWN ON THIS PLAN ARE ASTRONOMIC BEARINGS. A CLOCKWISE ROTATION OF 0°22'05" CAN BE APPLIED TO THESE ASTRONOMIC BEARING COMPARISONS TO CONVERT TO UTM GRID BEARINGS

SURVEYOR'S CERTIFICATE
I CERTIFY THAT:
1. THIS SURVEY AND PLAN ARE CORRECT AND IN ACCORDANCE WITH THE SURVEYS ACT, THE SURVEYORS ACT AND THE LAND TITLES ACT AND THE REGULATIONS MADE UNDER THEM.
2. THE SURVEY WAS COMPLETED ON THE 8th DAY OF JANUARY 2025.
JANUARY 14th 2025
TRISHA SNOW
ONTARIO LAND SURVEYOR

This plan of survey relates to AOLS Plan Submission Form Number V-96835

HEWETT AND MILNE LIMITED
ONTARIO LAND SURVEYORS
105 SHANE ST, UNIT 3
OWEN SOUND, ONTARIO
N4K 5N7
TEL: 519-376-5528
EMAIL: info@hewettmilne.ca

DRAWN BY	FILE #	FILE LOCATION
TB	23-231	17