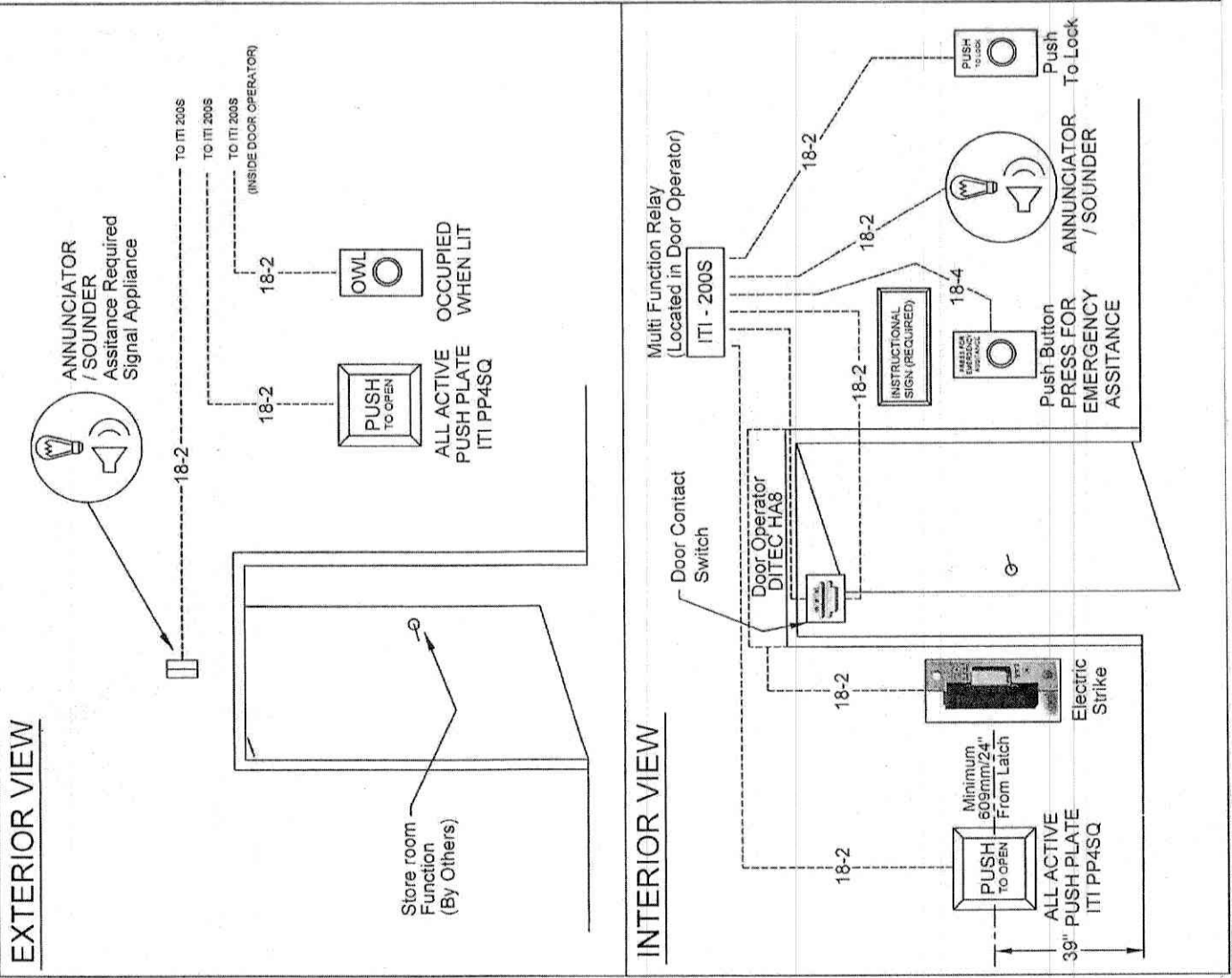
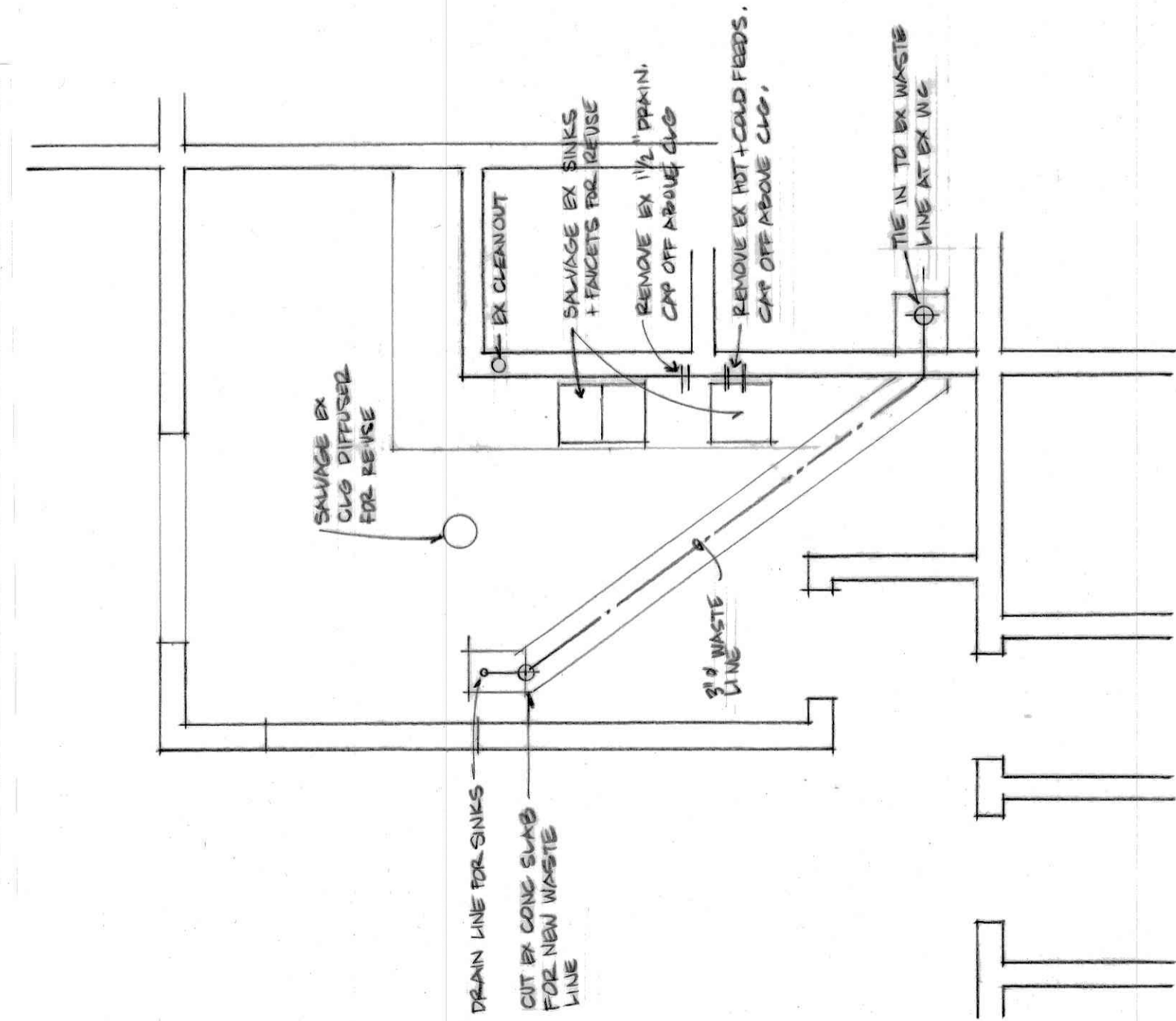


UNIVERSAL WASHROOM (GENERAL) APPLICATION LAYOUT AS REQUIRED BY OBC (Jan. 1, 2015) ONTARIO REGULATION 191/14(2014)

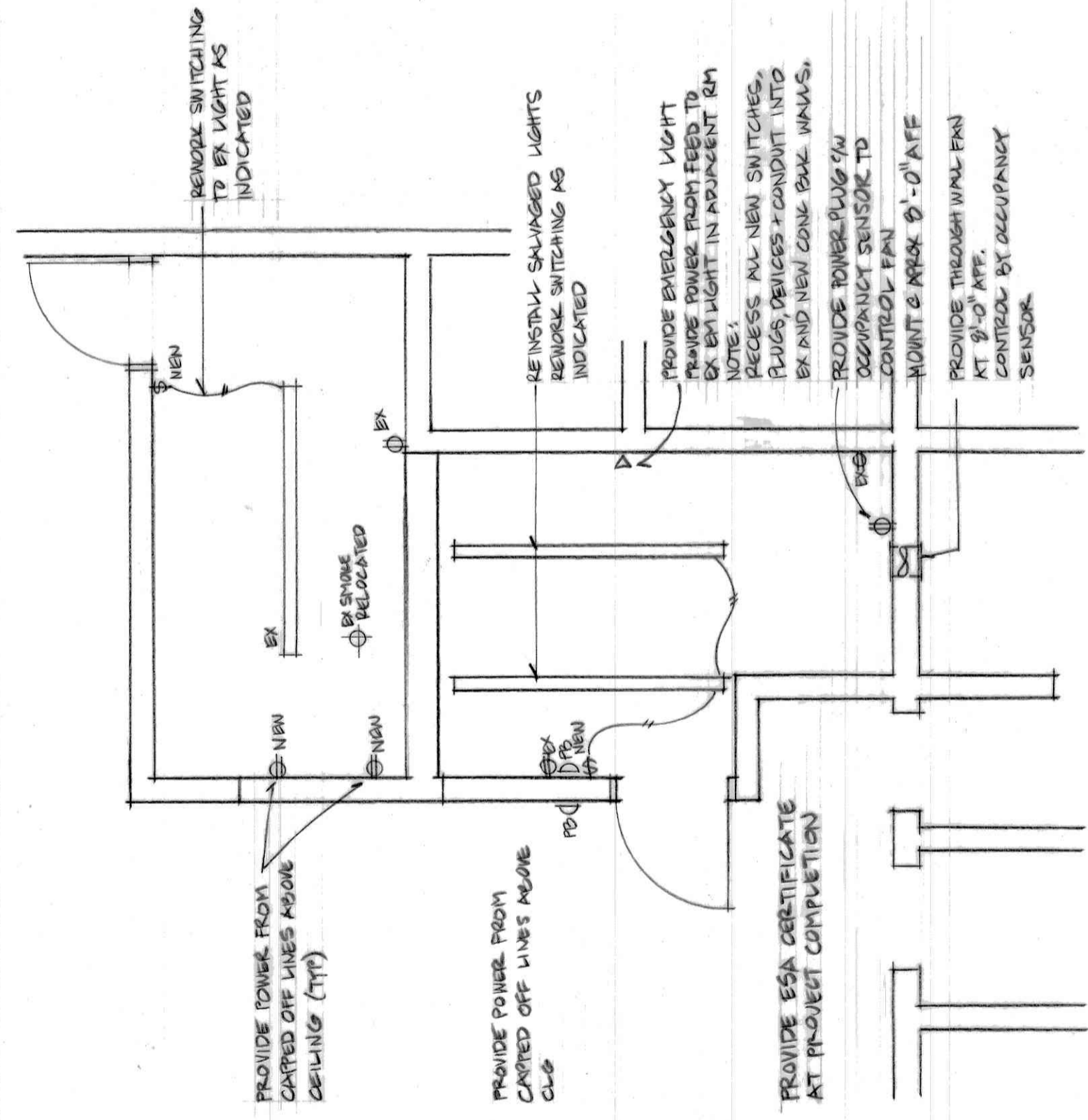


UNIVERSAL WASHROOM ACCESS - CONTROLS
PROVIDE ALL COMPONENTS FOR COMPLETE OPERATION

Plumbing Rough-in Schedule	Plumbing Fixture Schedule																												
<table border="1"> <tr><th>abbrev</th><th>style</th><th>DHW</th><th>DCW</th><th>San</th><th>Vent</th></tr> <tr><td>Sink</td><td>Lavatory</td><td>1/2"</td><td>1/2"</td><td>1 1/2"</td><td>1 1/2"</td></tr> <tr><td></td><td>Existing Sinks</td><td>1/2"</td><td>1/2"</td><td>1 1/2"</td><td>1 1/2"</td></tr> <tr><td>WC</td><td>Water Closet</td><td>1/2"</td><td>1/2"</td><td>3"</td><td>1 1/2"</td></tr> </table>	abbrev	style	DHW	DCW	San	Vent	Sink	Lavatory	1/2"	1/2"	1 1/2"	1 1/2"		Existing Sinks	1/2"	1/2"	1 1/2"	1 1/2"	WC	Water Closet	1/2"	1/2"	3"	1 1/2"	<table border="1"> <tr><th>sink</th><td>Wall mounted - Kohler/Brenham with stroud model No. K-1999-1N white chrome drain and overflow. Single lever control faucet - chrome</td></tr> <tr><th>WC</th><td>Floor mounted - Kohler Persuade Curv Comfort - two piece Model K-75799 white low soft close seat - Bemis 730USLEC</td></tr> </table>	sink	Wall mounted - Kohler/Brenham with stroud model No. K-1999-1N white chrome drain and overflow. Single lever control faucet - chrome	WC	Floor mounted - Kohler Persuade Curv Comfort - two piece Model K-75799 white low soft close seat - Bemis 730USLEC
abbrev	style	DHW	DCW	San	Vent																								
Sink	Lavatory	1/2"	1/2"	1 1/2"	1 1/2"																								
	Existing Sinks	1/2"	1/2"	1 1/2"	1 1/2"																								
WC	Water Closet	1/2"	1/2"	3"	1 1/2"																								
sink	Wall mounted - Kohler/Brenham with stroud model No. K-1999-1N white chrome drain and overflow. Single lever control faucet - chrome																												
WC	Floor mounted - Kohler Persuade Curv Comfort - two piece Model K-75799 white low soft close seat - Bemis 730USLEC																												



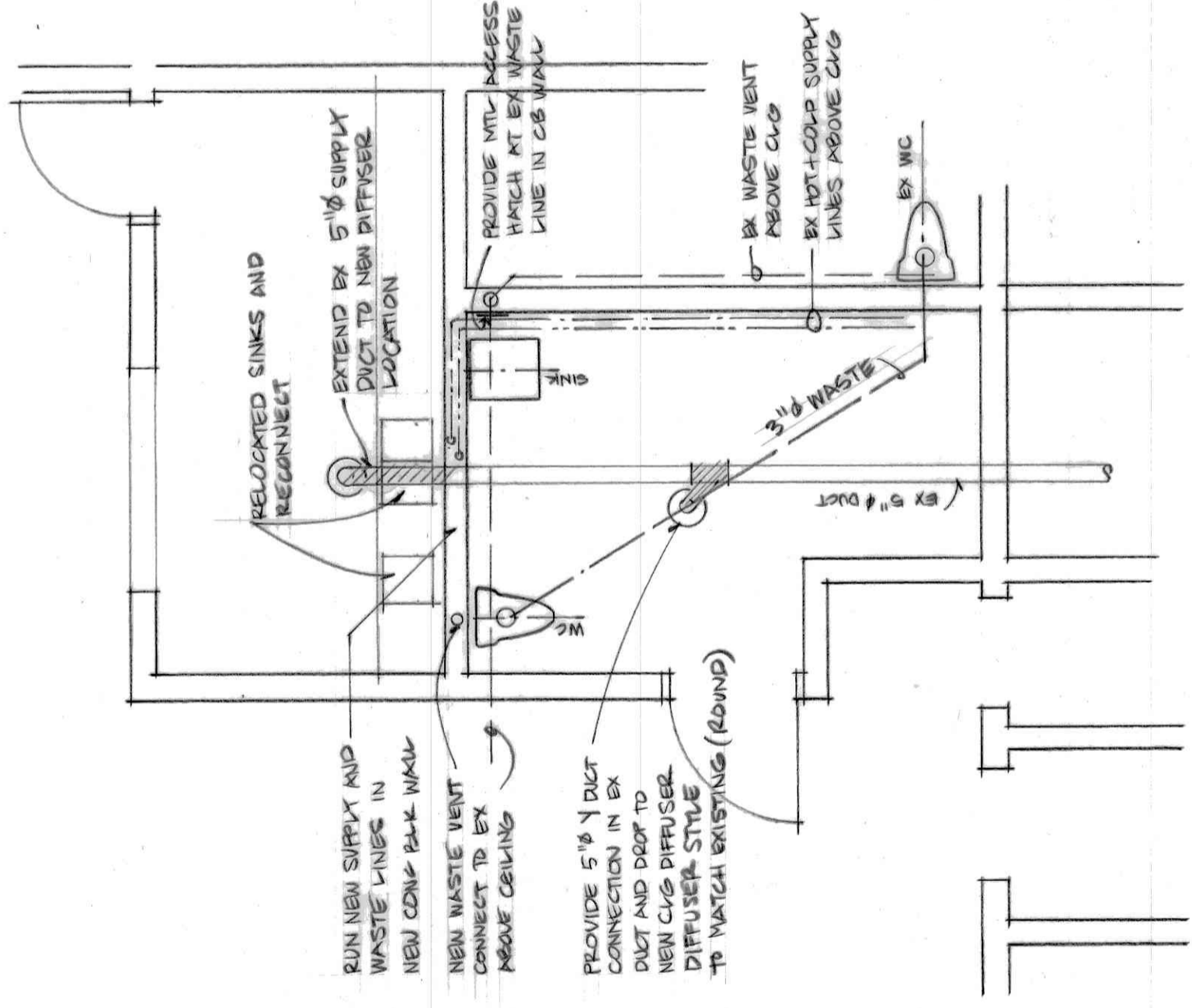
MECHANICAL PLAN 1/4" = 1'-0"



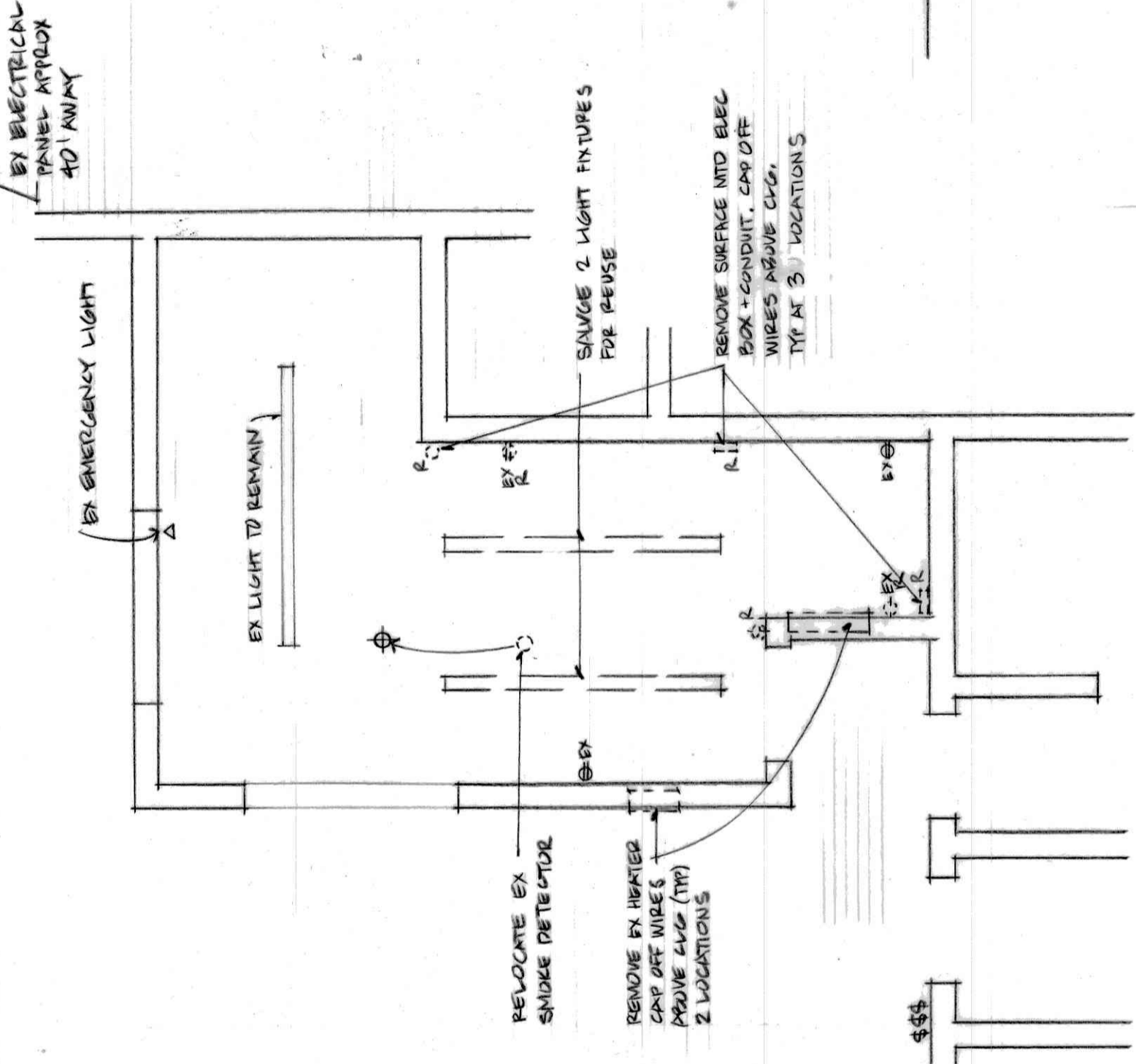
ELECTRICAL PLAN 1/4" = 1'-0"

Electrical Features	Notes
Emergency Lighting	Apmelux 200lm LED with battery backup AC65-277V. Modify for direct connection to junction box above ceiling. Concealed wiring in wall.
Through-wall Fan	SALFLO 6" propeller wall mounted 300 CFM. Modify for direct connection to junction box above ceiling. Concealed wiring in wall.

Door Schedule	Label	size	type	matl	frame	Remarks
A	3'-4" x 7'-0" x 1 3/4"	A	HM	HM	HM	3 hinges, Storeroom Lockset, Electric Strike, Kickplate, Wall Stop Door operator and Accessories, Push to Lock and Emergency Kit, Sweep. Field verify existing door size before ordering new hollow metal frame. Salvage and re-use existing hardware, including self closer and wall stop, Handle and hinges.
B	ex 3'-0" x 7'-0" x 1 3/4"	ex A	ex HM	ex HM	ex HM	



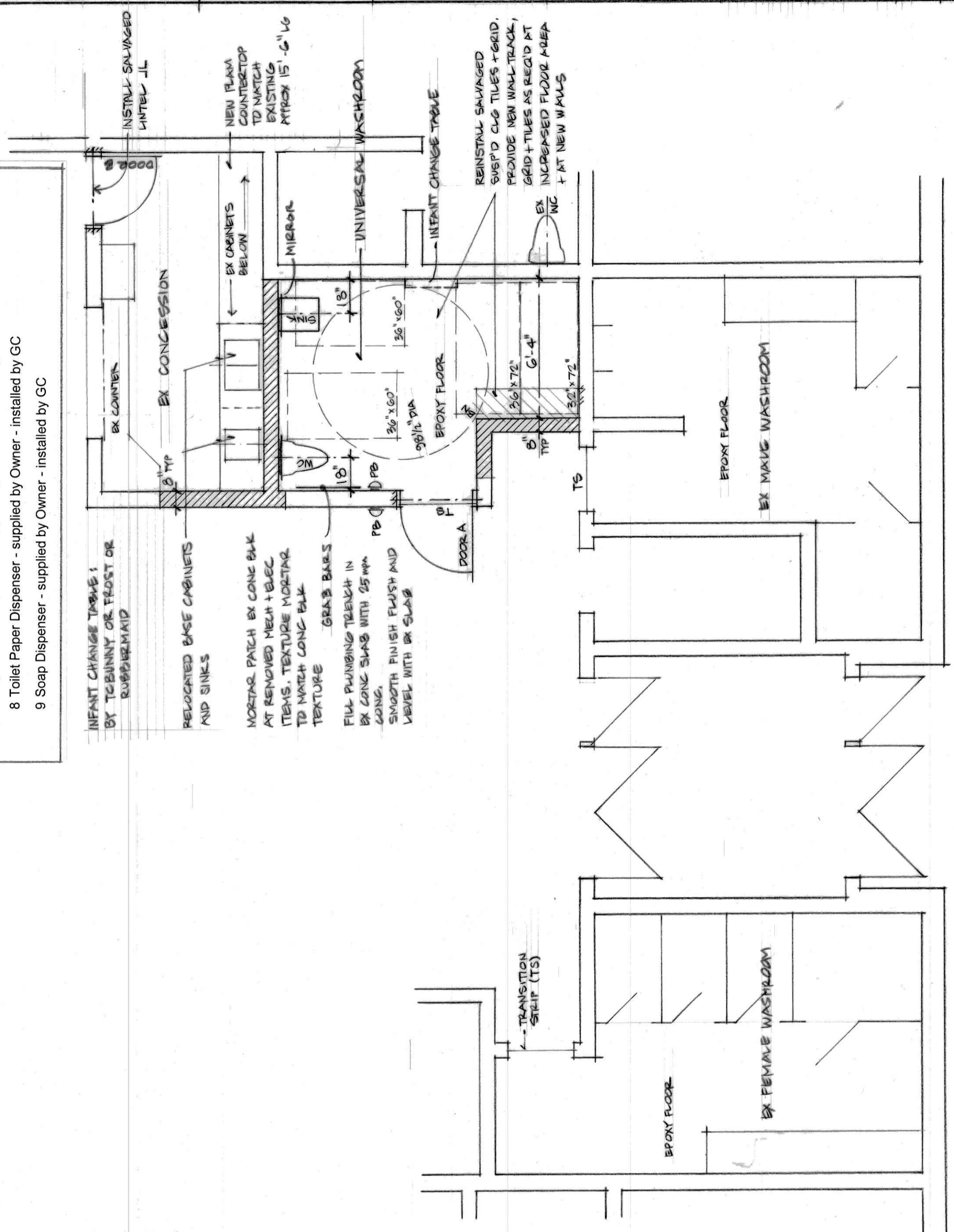
MECHANICAL PLAN 1/4" = 1'-0"



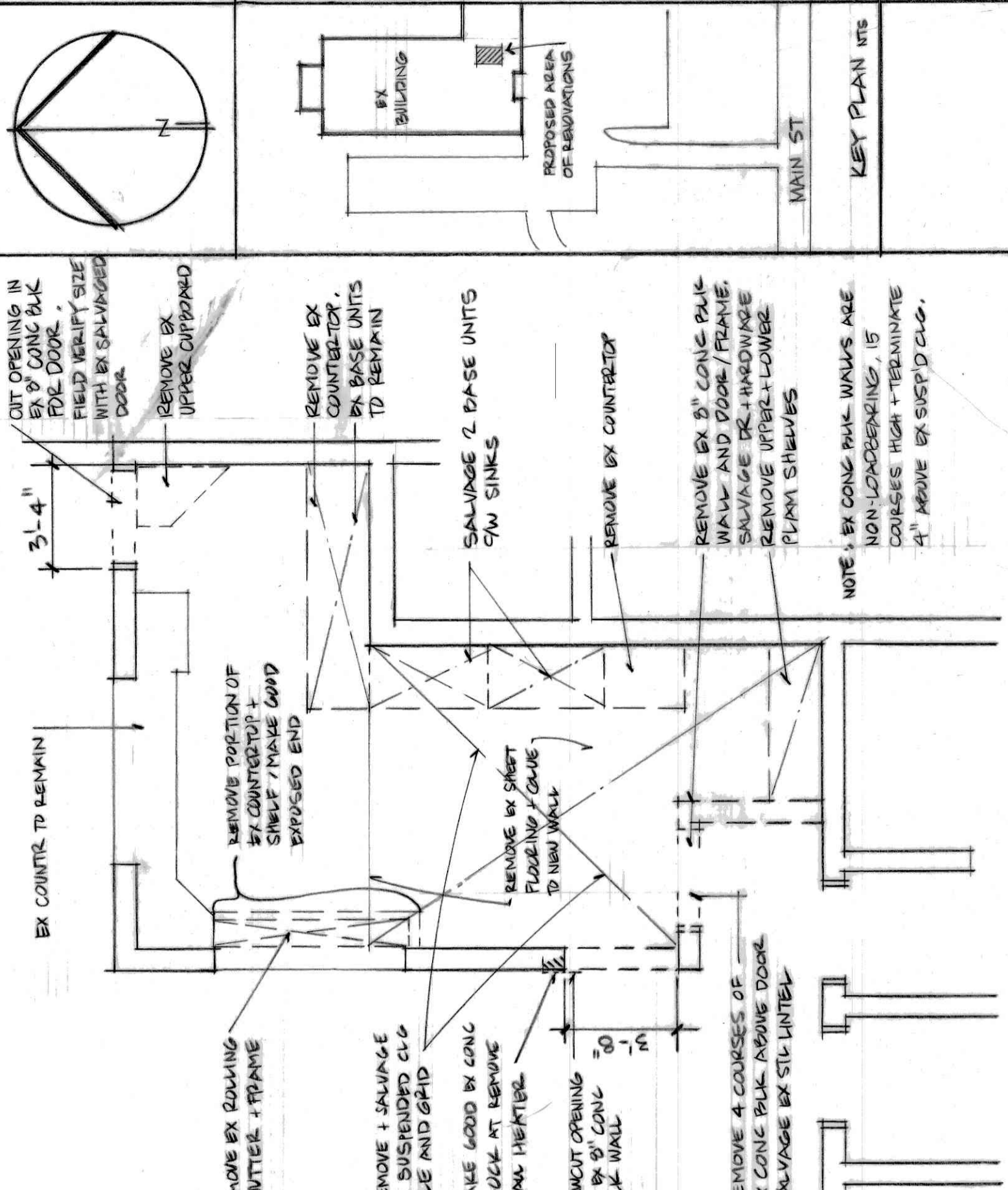
ELECTRICAL DEMO PLAN 1/4" = 1'-0"

- Washroom Accessories
- 1 Napkin Disposal - surface mounted - white epoxy finish - Frost Code 620
 - 2 Fixed tilt mirror - Frost Code 941-2436FT
 - 3 Shelf - Stainless Steel 4" x 18" - Frost Code 950-4
 - 4 Grab Bar - Stainless Steel 24" - 1 1/2" dia peened finish - Frost Code 1001NP 24"
 - 5 Grab Bar - Stainless Steel 30" x 30" - 1 1/2" dia peened finish - Frost Code 1001NP 24"
 - 6 Coat Hook - Safety style Frost Code 1150
 - 7 Paper Towel Dispenser - supplied by Owner - installed by GC
 - 8 Toilet Paper Dispenser - supplied by Owner - installed by GC
 - 9 Soap Dispenser - supplied by Owner - installed by GC

GENERAL DEMO PLAN 1/4" = 1'-0"



PARTIAL FLOOR PLAN 1/4" = 1'-0"



KEY PLAN ITS

PROJECT: WASHROOM RENOVATION + DISTRICT SPORTS CENTRE
 ARCHITECT: McCallum Sutherland
 LICENSING: ON
 SCALE: 1/4" = 1'-0"
 DATE: NOVEMBER 27 2024
 DRAWING NO: 1/41