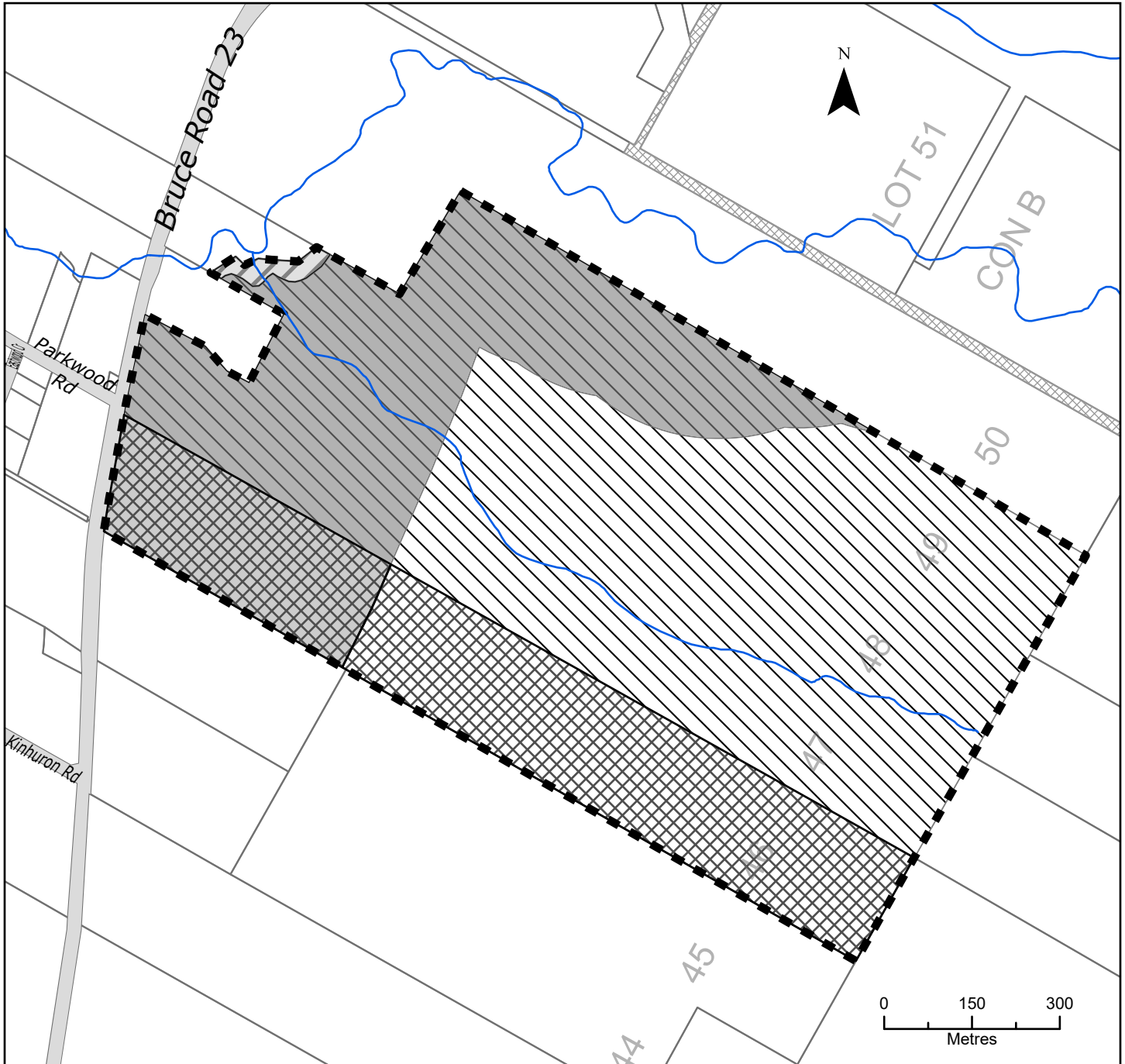
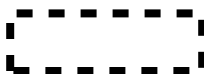







Schedule 'A'

CON A PT LOT 46 - Roll Number 410821000501400
 CON A PT LOTS 47 TO 49 AND; RP 3R6716 PART 1 - Roll Number 410821000501600
 Municipality of Kincardine (Kincardine Township)



-  Subject Property
-  Lands zoned A1-a - General Agriculture Special
-  Lands to be zoned A1-a-H1 - General Agriculture Special Holding
-  Lands zoned A1 - General Agriculture
-  Lands to be zoned A1-H1 - General Agriculture Special Holding
-  Lands zoned EP - Environmental Protection

This is Schedule 'A' to the zoning by-law amendment number _____ passed this _____ day of _____

Mayor _____

Clerk _____