

A black and white photograph of a snowy park path. The path is covered in a thick layer of snow and is flanked by rows of wooden benches. On either side of the path, there are many bare trees with intricate branch structures, their trunks and branches dusted with snow. The overall atmosphere is quiet and serene. The text is overlaid on the left side of the image.

# INVERHURON PARK

ENTHUSIASM AND COMMUNITY SUPPORT BREEDS A LIVING PARK FOR  
FUTURE GENERATIONS

# Purpose of our Presentation

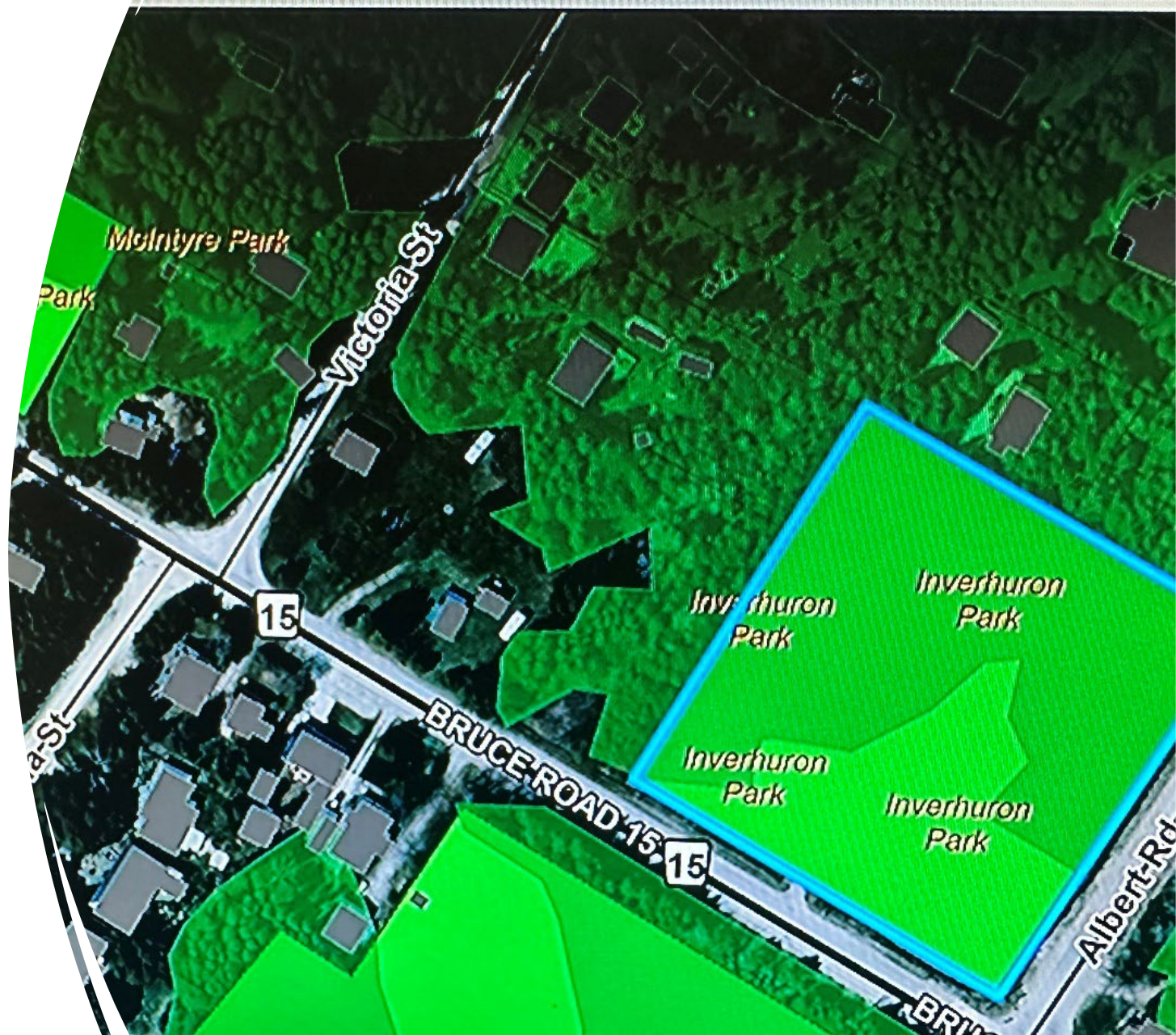
- To be the voice of a community that is vibrant, engaged and motivated to maintain the best parts of our community while enhancing and expanding our ability to deepen our community relationships.
- We hope to impress upon you the overwhelming voice of this community and its desire to establish a community park which brings together intergenerational members of families and neighbors, being the hall mark of Inverhuron.



# INVERHURON UPPER PARK

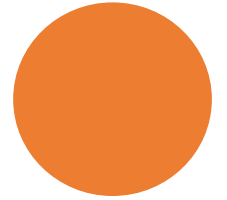
---

- The Inverhuron Upper Park is special in that its location, size and natural foliage provides the ability to address not only the recreational features listed by our community, but also the conservation request expressed by numerous residents.
- The size of the Upper Park, approaching 2 football fields, provides the basis of a park 'blank slate' on which to readily find a balance between recreation and conservation.



# Inverhuron Park

- Is located at the junction of Bruce Rd 15 and Albert Rd.
- The park is centrally located along the east-west and north-south axis of the township. and spans both the east and south corners of the intersection.
- As evident in the above map by the darker shade of green, approximately 2/3rds of the park is treed.
- This feature provides us with a foundation upon which to develop a truly balanced outcome between conservation and recreation.



# CURRENT FACILITIES PROVIDED

One Basketball hoop

Swing set for elder kids on the  
southeast perimeter.

One Slide

Gravel foundation



## *WHATS MISSING ?*

To clearly understand our community's needs, opinions and wishes,

The IDRA took the decision to issue an open-ended question survey to all residents of the community.

What follows are their responses in their own words.





*QUESTION: Describe the benefits a developed park would bring to your family and the community.*

(RESPONSES LISTED THROUGHOUT ARE ACTUAL WORD FOR WORD AND REFLECTIVE OF THE WHOLE)

- allow to meet neighbors and increase the use for the community

A gathering place for multi generations to enjoy sports, games and open spaces including park equipment

All local activities with no need to travel outside of the community

Would bring community together and where you could meet others from the area


A place to meet other residents, an alternative to the beach.



***Describe the benefits a developed park would bring to your family and the community.***

- Parks are an important part of belonging to a community
- Place to go and meet other residents, activities when lake water cold or rough.
- A community hub
- A chance to connect with other community members





# ***Describe the benefits a developed park would bring to your family and the community.***

- 
- gathering place for children and families
  - Social connections
  - Green space for the soul
  - Splash pad for little ones
  - Keeping children active keeps everyone happy.
  - Close by recreationally activities within walking distance
  - safe place for children to play and for adults to get exercise
  - We really need stuff for our young teens! Just somewhere for them to hangout. Having something down the street would be amazing!
  - Safe area to develop relationships with new people in community. Also, to foster healthy habits (walking, exercise)

---

## “KEYWORDS” are informative

- The frequency of Key words are tabulated to clearly illustrate the intent and sentiment provided by the survey responses.
- The utility of this approach can be reflected in our planning and staging of the park's development.
- For instance, ‘walking paths’ are valued second only to the shaded picnic area and hence is prioritized in the design stage.
- The prioritized interest reflected in the following chart can be further used to address funding schedules and implementation priorities.



# *Describe the benefits a developed park would bring to your family and the community.*

KEYWORDS	POSITIVE VALUE	KEYWORDS	POSITIVE VALUE
	FREQUENCY		FREQUENCY
FAMILY(IES)	24	SAFE/FUN	8
CHILDREN/KIDS/GRAND	18	EXERCISE/OUTDOOR	13
COMMUNITY	23	ACTIVITY	19
TOGETHER/GROUP	9	ALTERNATIVES	8
MEETING/GATHER/CONNECT	21		
TOTALS	85		48
<b>KEYWORDS</b>		<b>CONCERNS</b>	
NOISE		1	
TREES		3	

The above chart's illustration of 'key words' provides us with a glimpse into the values held within a family and by extension the community and can be reinforced by a park design.

# QUESTION 3: *What is your primary reason/activity for visiting a park*

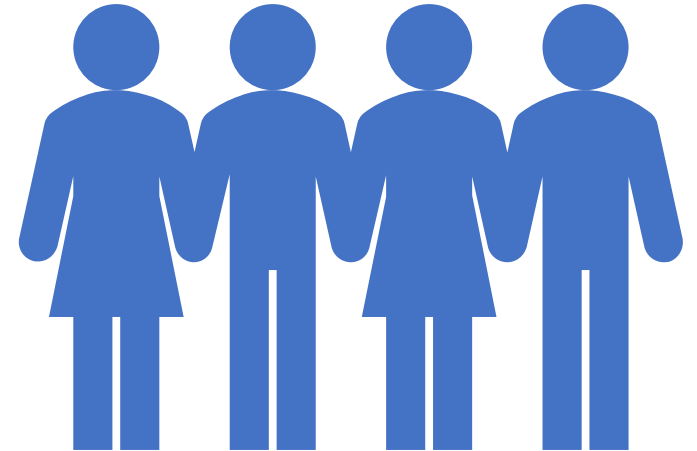
KEYWORDS	FREQUENCY	%	KEYWORDS	FREQUENCY	%
EXERCISE	45	57%	KIDS/FAMILY GRANDKIDS	24	30%
RELAX/WALKS GREENSPACE	11	14%	ALTERNATIVE TO BEACH	ALL	100%
COMMUNITY	17	21%			

PERCENTAGE IS BASED ON 86 RESPONSES

The above chart's illustration of 'key words' provides us with a glimpse into the ACTIVITY HIERARCHY reflected in the responses

**QUESTION 4: How  
would accessibility  
to an activity park  
within Inverhuron  
for all ages impact  
your impressions  
of our community**

- *It would be a welcome mat to the front door of Inverhuron.*
- *Definitely more opportunity to meet new community members*
- *It would be a wonderful addition to the community*
- *Safe place for all ages to accumulate*
- *It would be nice to feel that Inverhuron has had some investment from the town. Our playground has not been updated in two decades and is very basic*
- *favourable impression of a community which is interested in its residents*
- *Community involvement and interaction for the wellbeing of all ages.*
- *Inclusive*
- *Think it would be a great add for everyone. One more fun/active thing for people to enjoy*
- *I think it would be great to be able to use and see a real activity part four those in Inverhuron*





# CONCERNS\*:

---

- “Use the trees and forested areas to explore.”
  - “No benefits if Green space is limited, and trees are removed.”
  - “An undeveloped, treed walking path that preserves some of Inverhuron. Too many trees have been removed, and enough development already-”
- 

- \*The concerns re preservation of trees and forest are addressed in the design stage of the project and discussed within the framework of
- *‘STAGING AND INTEGRATION (not included in this presentation)*

# GET CREATIVE with the IDRA

## SPECIFIC USES AND VALUE

*Covered Picnic Area:  
(examples)*

Family gatherings in an  
open setting

Seniors Day for cards,  
bingo, etc.

Magic Day for children  
and families to enjoy  
local magicians' talent.

IDRA 'event' days  
without weather  
restrictions\*\



# GET CREATIVE WITH THE IDRA

- ADDITIONAL ACTIVITIES
- OPEN SPACES FOR ORGANIZED ACTIVITIES SUCH AS FRISBEE, MINI SOCCER, MINI BASEBALL
- EDUCATIONAL FOCUS FOR SMALL GROUPS
  - (SMALLER OPEN ISLAND SPACES WITHIN THE PERIMETERS OF THE TREED AREA WITH APPROPRIATE STRUCTURES. IE OPEN GAZEBOES)
  - EXAMPLES
    - HISTORICAL CORNER
    - BIKE CARE AND MAINTENANCE
    - MUSIC LESSONS
    - INDIGENOUS CORNER
    - PAINTING LESSON
    - ARTS AND CRAFTS



## ***SURVEY RESPONSES - WORTH SAYING AGAIN***

- *“Community involvement and interaction for the wellbeing of all ages.”*
- *“It would create a center of activity for the community.”*
- *“It would be a welcome mat to the front door of Inverhuron.”*
- *“Definitely more opportunity to meet new community members.”*
- *“It would be a wonderful addition to the community.”*
- *“Improving the community for generations to come.”*
- *“So many IDRA events that could be expanded, to include more activities for children, teens and adults alike.”*
  - *...” would be proud to have this in our communities.”*
- *“Would make our experience richer, meet more of the community.”*
  - *“Would definitely add more to our overall quality of life!”*
- *“It would prove that the community is invested in making the area better for all the different generations that live, cottage or rent here.”*



---

## *SUMS IT UP !*

---

*A community that invests in itself is impressive. The upper park is an introduction to the community, and first impressions have a powerful effect on future opinions of Inverhuron; for both recreation and tourism. Just as importantly, a development of this kind is fundamental to a sustained community development process encouraging continued and future securement of resources. Investment that has impact.*



# The people who will make this happen

- We are fortunate to have so many dedicated volunteers who both support and are members of the INVERHURON DISTRICT RATE PAYERS' ASSOCIATION (IDRA)



## ACTIVE AND SUPPORTED

- An event was planned and hosted by the volunteer members of the IDRA on a biweekly basis over the summer of 2023,
- Kids Day attracted a record 124 youngsters



## ACTIVE AND SUPPORTED

- We hope this small sample will convey the depth of support and ongoing commitment our IDRA receives from our community



# ROAST

ATURDAY, AUGUST 31  
5PM-11PM AT THE  
UPPER PARK

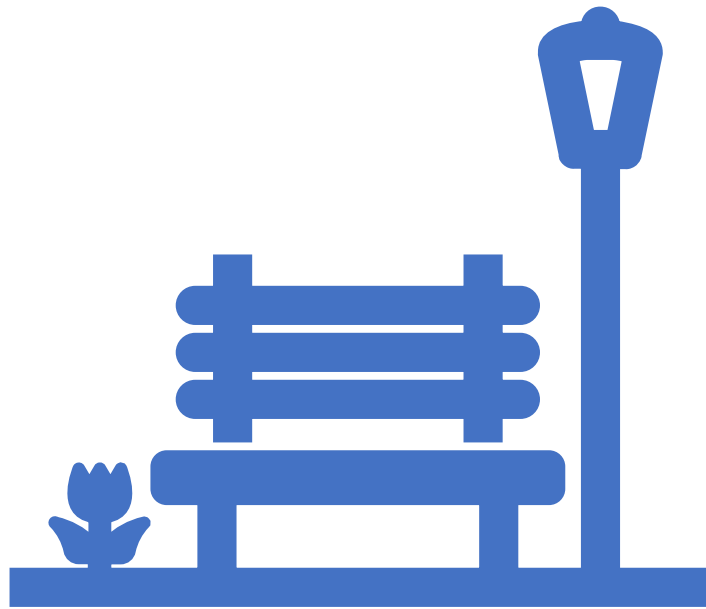
AST TO LIVE JAZZ AT 5:30  
MURAI FLY PERFORMING AT DUSK  
D SELECTION  
TURING GLUTEN FREE  
EWAY BURGERS & HOT DOGS



# GIVE US A CHANCE TO SHOW OFF

- Our IDRA acts as a lens focusing the energy of our community in value expressed activities.
- Our new Inverhuron Park will be the next beneficiary of that focus, which is why we feel assured our representations to you of continued use and fulfillment will come from this investment.
- We believe our community has demonstrated the strength of commitment to fund, design, build and sustain a community park that reinforces the many values expressed in our survey.
- And we believe our community has stated this clearly, emphatically and categorically.





## What You Can Do For Us

- **Trust Us!**
- Enter into a partnership with our community whereby the IDRA or its agency assumes responsibility for developing our park as envisioned by our community survey.
- Provide us with a 10 -year renewable lease and a bit of seed capital and we will take it from there..



# What We Can Do For You

- We will provide a “**Model of Collaboration**’ that is:

Efficient with the use of our community resources

- Responsive to the changing character and needs of our community
- Cost effective in developing, funding, and maintaining a community park that truly addresses the needs and capacities of its community.
- Utilizes our status as a Registered Charitable Organization to efficiently raise capital and attract the services needed in creating and managing a park
- **MOST IMPORTANT: A relationship that does not add to the annual tax gap as projected in the AMP 2022**



# What Makes Us Different



- We have the ability to attract the support of our local businesses for our project in a very tax effective manner.
- A portion of the cost of each service delivered can be offset using the Charitable Donation deduction provided by our Registered Charitable designation.
- We currently have 2 local businesses which have indicated their willingness to support the project on a deductible charitable basis.
- We intend to add several more.

# What Makes Us Different:

## Our Reputation



- The IDRA has been in existence since 1978 and has built a trusting relationship with several generations of volunteers each and every summer.
- We are an organization whose service is built on volunteers and relies on volunteers for program delivery.
- Building and maintaining a park responsive to its community relies upon the foundation our IDRA has established and the trust our community has in the IDRA.

# GENERATIONS

- INVERHURON is known to be one of the founding centers of Kincardine. We have a long history bridged by generations of the same family name.
- Prior to the settler lineage, a society of indigenous peoples called this region home. And their family names continue to this day.
- Our intention is to build a park that will not only celebrate a blended intersection of conservation and recreation, but also the matrix of peoples whom this land has supported and who in turn have called home.

“WE LOOK FORWARD TO IMPRESSING YOU”

