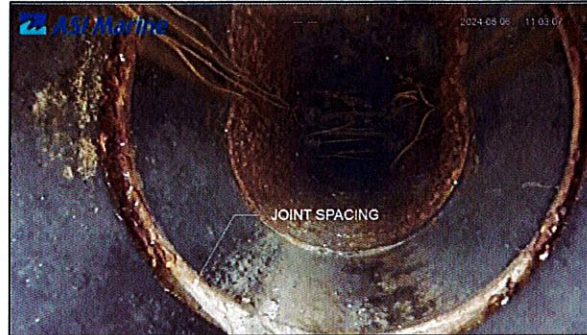


About 3.5 m upstream of the bell mouth, a noticeable joint spacing was observed around the circumference of the pipeline. The joint spacing was approximately 2 cm in longitudinal length.



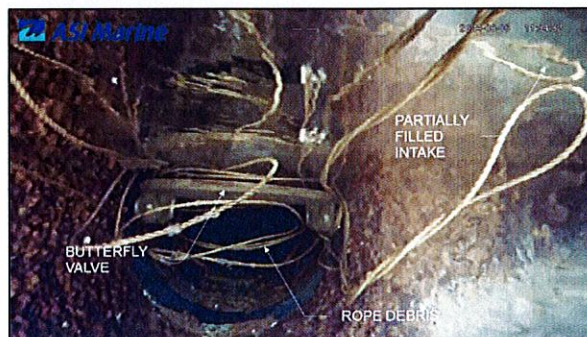
**Figure 7: Joint spacing**

About 4 m upstream of the bell mouth, a tee in the pipe was observed in the 9 o'clock position. At the time of inspection, it was explained by MOK personnel that this tee likely connected to an abandoned intake.



**Figure 8: Tee**

About 4.5 m upstream of the bell mouth, another butterfly valve was observed. The valve was open, and rope debris was observed to be caught in the valve. The pipe was also partially flooded at this location. The ROV was unable to travel any further due to the valve and entanglement hazard.



**Figure 9: Butterfly valve with caught debris**