

Recommendation to Council Station Beach Boardwalk Replacement

March 6, 2023

COUNCIL CHAMBERS

KINCARDINE ONTARIO



Introduction

- ❖ GM Blueplan was retained to review the recommendations from the Waterfront Master Plan and implement the ones specific to the Station Beach Boardwalk
- ❖ Public Consultation included:
 - ❖ In person Open House on November 23, 2023 to gather insights into the current boardwalk, its use and desires for the future of the boardwalk
 - ❖ Online Survey of the proposed alternatives for the boardwalk revitalization.
 - ❖ Tonight's presentation of the results and a proposed conceptual plan



Waterfront Master Plan Recommendations

- ✓ *Quality, Performance & Economy (life-cycle costing)*
- ✓ *Environmental Responsibility (native, biodiverse, low maintenance plantings and environmentally friendly construction materials)*
- ✓ *The Spirit of the Place (inspired by the best of the existing waterfront and greater community architecture and landscapes. Coordinate, consolidate built forms and site furnishings)*
- ✓ *Waterfront Safety (Mitigating risks through supportive infrastructure, stabilizing slopes, limiting access to undesirable areas such as riptide areas and dunes)*
- ✓ *Traditional Landscapes (increase the natural buffer, transitional landscape, low maintenance gardens)*
- ✓ *Barrier Free Environment (comfortable walking distances, designated beach access points, clear pedestrian and vehicular routes, lighting, signage, walkway surfaces)*
- ✓ *Natural Processes (natural beach and dune process to carry on)*



What we heard at PIC #1

1. Keep the Community Gardens
2. Don't complicate the space with markets, vendors or activities
3. Pick a durable material that isn't hot and is beach appropriate
4. Restore/enhance and maintain the dunes, celebrate their beauty
5. Improve vistas to the lake
6. Control the sand migration onto the boardwalk
7. Increase regular maintenance
8. Enhance parking
9. Make it a boardwalk for everyone

What we heard through the Survey

1. Maintain all the Community Gardens
2. Increase maintenance of the boardwalk
3. Construct a single low boardwalk along the dunes
4. An accessible (wooden/composite) viewing platform at the southern end
5. An accessible viewing platform at the northern end (possibly raised)
6. Repair the existing gazebo

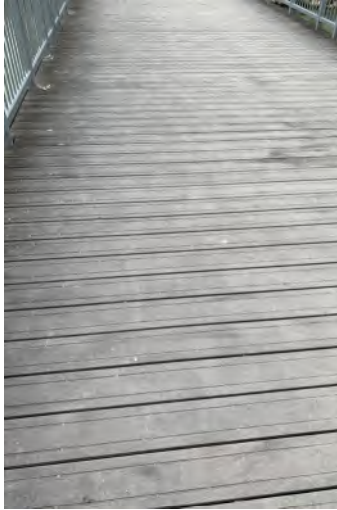


Alternatives

Boardwalk Materials	Concrete	Asphalt	Wood	Composite/ Plastic ✓	Stamped Concrete/Stone ✓
Fencing	Solid Wood	Posts and Wood ✓	Post and Rope ✓	Metal post and bar ✓	Picket fence
Lighting	New Overhead		Existing	Bollard ✓	Pathway
Alignment	Raised North End		No raised portions ✓	Straight ✓	Meanders
Dune Restoraton	Limit Accesses ✓		Foredune Plantings ✓	Raised Accesses	Native Planting ✓

Concept Recommendations

- ❖ Single Accessible Boardwalk out of a durable material
- ❖ Safe space, with width to accommodate mobility devices, resting areas
- ❖ Lighting that respects the environment while enhancing safety
- ❖ Maintain the existing “feel” of the boardwalk and area
- ❖ Reduce the number of informal paths through the dunes by the use of fencing, plantings, dune regeneration, signage and beach entrances as focal points
- ❖ Implement a Dune Restoration program, including educational signs, and the Christmas Tree Pilot Project
- ❖ Implement a regular maintenance program for sand migration onto boardwalk
- ❖ Include parking upgrades as next phase, including new bio-swale gardens and pervious surfaces, relocate the main vehicle access



Boardwalk Material Alternatives

Materials:

- ❖ Wood
- ❖ Composite or Plastic
- ❖ Interlocking Stone or Flagstone
- ❖ Stamped Concrete
- ❖ **Recommendation: Use Composite/Plastic boardwalk material with stamped concrete at the entrance connections to the parking lot.**
 - ❖ The boardwalk should be designed with 2.4m width, built in modular sections for maintenance, board spacing to ensure accessibility.
 - ❖ Entrances to the parking lot should be wider, for congregating and drop-off considerations.
 - ❖ Access ways to the beach should be curved (S-bend) and made from composite material.
 - ❖ Mobi Mats or modular equivalent for beach access terminations





Lighting Alternatives

- ❖ Keep the existing Light Standards
- ❖ Replace with overhead Lights
- ❖ Use bollard lighting
- ❖ **Recommendation: Use bollards along the boardwalk and new Overhead Lights at the entrances to the parking lot.**
 - ❖ Use 'shielded' dark sky compliant light fixtures-
"To minimize the harmful effects of light pollution, lighting should: have a warmth rating of 3,000k or less.
 - ❖ Only be on when needed; exclude using motion sensor lighting.
 - ❖ Dark sky certified fixtures
 - ❖ Only light the area that needs it.
 - ❖ Be no brighter than necessary.
 - ❖ Minimize blue light emissions.
 - ❖ Be fully shielded (pointing downward, lower 180* or less)



Fencing Alternatives

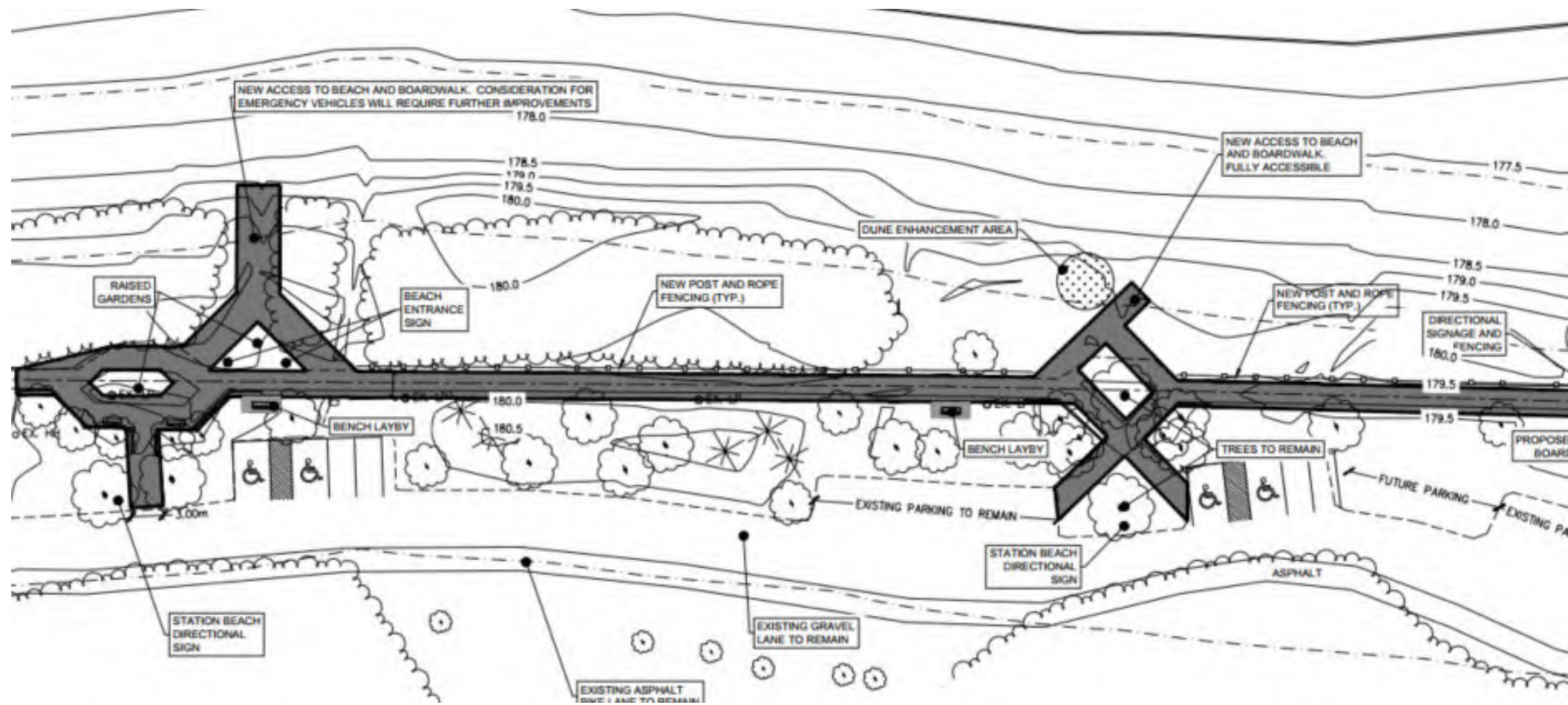
- ❖ Post and Rope
- ❖ Wooden
- ❖ New Metal bar
- ❖ Keep and Salvage Existing
- ❖ **Recommendation: Use post and rope fencing with appropriate signage and dune restoration to prevent trespassing between the boardwalk and the dunes**



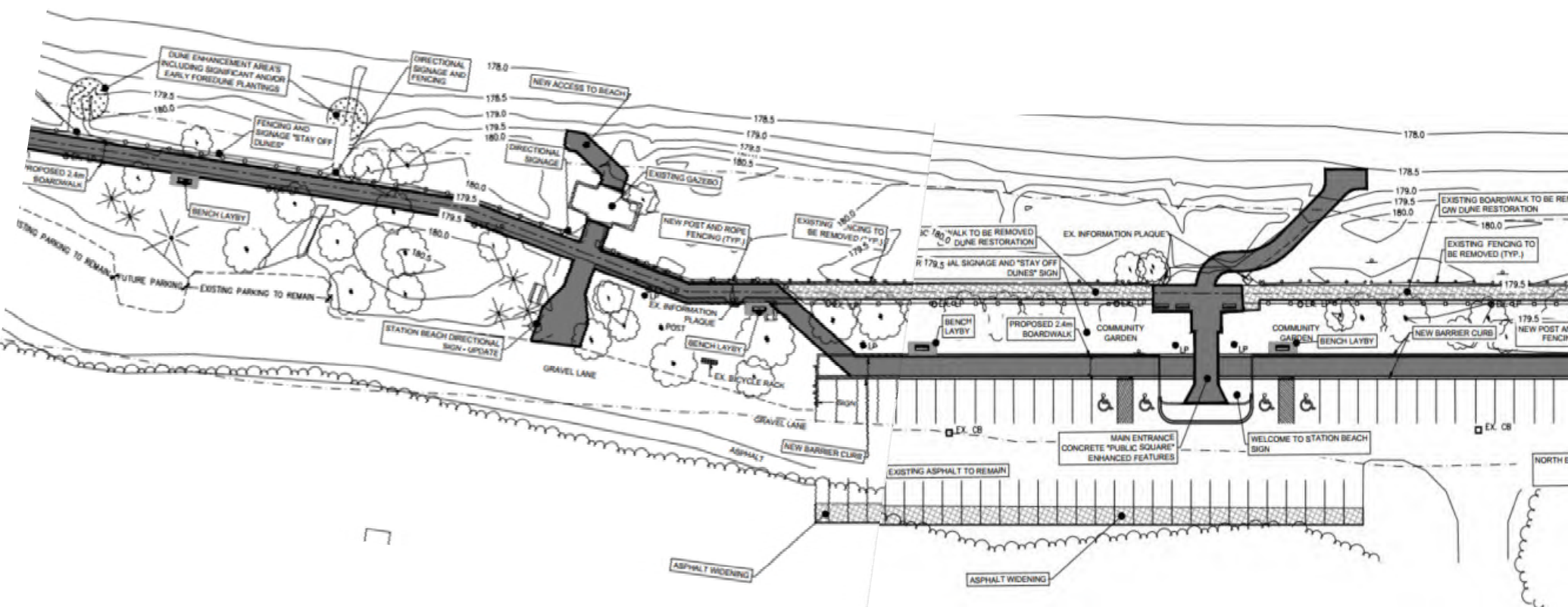
Recommendations in the Design

1. Improved signage/fencing for keeping people off the dunes
2. Accessible pathway for pedestrians only
3. Terminate boardwalk at the existing “Kincardine” Sign
4. Maintain wood or wood-like finish
5. Maintain the same location of the boardwalk
6. 4 main access points to the beach, 2 close to the washroom, 2 in the central area
7. Keep the community gardens with plantings
8. Improve the gazebo
9. Provide dune restoration through plantings and fore-dune work
10. Consider raised viewing platform at north end

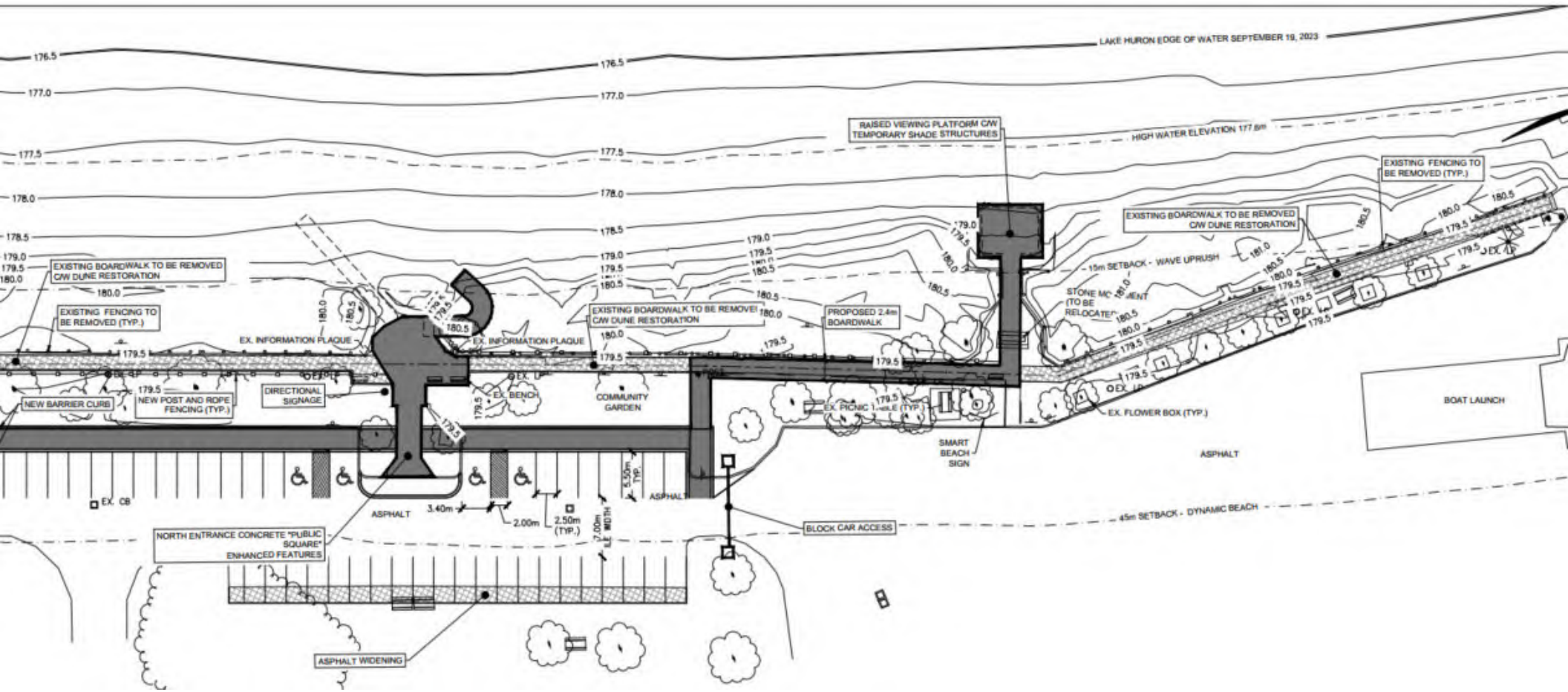




Recommendation Sketch - South



Recommendation Sketch - Middle



Recommendation Sketch – North

Thank you

What's Next?

- 1) Prepare Tender Drawings, Construction Specifications, Cost Estimate
- 2) Staff review of information
- 3) Inclusion in Capital Plan, for 2025 and beyond

Amanda Froese, P. Eng. FEC
Project Manager
GMBlueplan Engineering Ltd.
amanda.froese@gmblueplan.ca



Jayne K. Jagelewski
Director of Community Services
The Municipality of Kincardine
recreation@kincardine.ca