

Proposal - Outdoor Pickleball(PB) Courts



Kincardine Pickleball Fundraising Committee

- Sandy Black
- Terry Brown
- Catherine Davidson
- Cathy Ellis
- John Hamilton
- Martha Lootsma
- Morrison MacKenzie



Benefits of Pickleball

- Good social activity.
- Builds muscle and maintains flexibility.
- Attracts tourists and visitors to the town.
- Easy entry and low cost to play.
- Multi-generational play.
- Improves the fitness and health of our residents.



Background

- Pickleball is considered one of the fastest-growing sports in NA.
- Played in Kincardine since 2009 and continues to grow every month.
- Over 175 players on our email list, with around 50 players a day participating at the Davidson Centre in the winter.
- Pickleball players in Kincardine have been advocating for a dedicated outdoor facility for over 5 years.
- Many communities in Ontario, big and small, are developing dedicated Pickleball courts and seeing a huge response in player usage.
- The Municipality of Kincardine in developing a set of dedicated courts will promote the health, welfare and the active life style of its citizens.

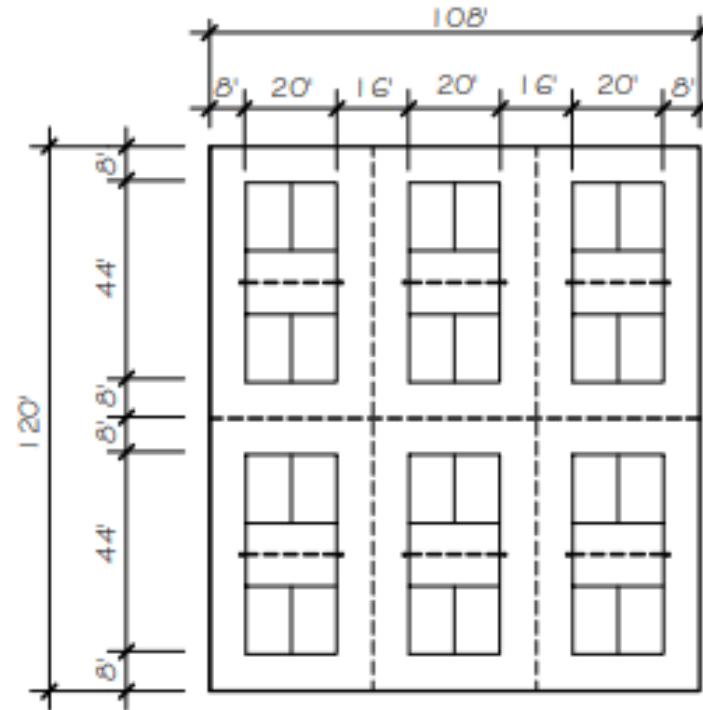


Potential Partnership

- Targeting a partnership with the MOK and the Rotary Club
- Assistance in fundraising.
- Support to build a pickleball park in the Municipality of Kincardine.

Our Proposal

- 6 outdoor pickleball courts
- Near washroom facilities
- Access to parking
- Appropriate distance from residential area.
- Room for expansion



Preferred Design/Location



Goderich outdoor pickleball facility
(design example)

- McPherson Park
- Davidson Centre

Pros and Cons of Possible Locations

McPherson Park	Davidson Centre (Water Tower)	Connaught Park	Tiverton	Skateboard Park
<ul style="list-style-type: none"> • 85% of survey support Kincardine location • Room for 6 courts • Close to changeroom and washroom facilities • Access to parking • Available land using the horseshoe pits and shuffleboard space • Driving or walking distance for majority of pb players • Close to schools • Ease of play for drop-ins • Easy access for construction • Good drainage 	<ul style="list-style-type: none"> • 85% of survey support Kincardine location • Room for 4 courts • Close to changeroom and washroom facilities • Access to parking • Appropriate distance from residential area • Driving or walking distance for majority of pb players • Close to schools • Ease of play for drop-ins • Easy access for construction • Good drainage 	<ul style="list-style-type: none"> • 85% of survey support Kincardine location • Room for 6 courts • Possible expansion • Close to changeroom and washroom facilities • Access to parking • Driving or walking distance for majority of pb players • Easy access for construction • Good drainage 	<ul style="list-style-type: none"> • Room for 6 courts • Possible expansion area • Close to washroom facilities • Access to parking • Easy access for construction • Good drainage 	<ul style="list-style-type: none"> • 85% of survey support Kincardine location • Close to changeroom and washroom facilities • Access to parking • Existing concrete pad • Appropriate distance from residential area • Driving or walking distance for majority of pb players • Close to schools • Ease of play for drop-ins • Easy access for construction • Good drainage
	<ul style="list-style-type: none"> • Only room for 4 courts by the water tower. 	<ul style="list-style-type: none"> • Close proximity to residential area • Further away from schools • Encroach onto a baseball diamond or track 	<ul style="list-style-type: none"> • Low percentage of players in Tiverton • Majority of players driving to facilities • Too far from schools • More difficult for drop-ins 	<ul style="list-style-type: none"> • Only fit 3 courts • Difficult to expand due to ridge, shelter and proposed skate board park • Confusing lines and markings • Potential schedule conflicts with three users

Expenses (approx.)

• Survey/Layout	\$ 1,500
• Sub-base & Asphalt	\$ 71,000
• Chain Link Fence	\$ 42,000
• Surfacing & Painting	\$ 47,000
• Landscaping	\$ 3,500
• Equipment	\$ 5,000
• Lighting	\$ 10,000
• Contingency	\$ 20,000

Total Investment approx. \$200,000



Court Uses

- Memberships (potential. 150)
(Recreational, Intermediate, Advanced youth and adult play)
- Develop youth programs
- Drop in play for children and adults
- Schools (elementary and high school)
- Clinics
- Day Camps
- Tournaments
- Scrambles
- Fun Theme Days/Nights
- Special Olympics



Potential Grants and Sponsorship

- | | |
|-----------------------------------|--------------------|
| • Community Investment Grants | \$3,000 - \$35,000 |
| • New Horizons Grant | \$25,000 |
| • Meridian Good Neighbour Program | \$500 - \$5,000 |
| • Hydro One | \$1,000 |
| • Walmart – Local Giving | \$1,000 |
| • Ontario Government Funding | \$1,000 - \$25,000 |
| • Ontario Sports Network | - |
| • Ontario Trillium Foundation | \$150,000 |
| • Misc. Sponsorship | \$1,000 - \$5,000 |
| • Court Naming Opportunities | \$2,500 - \$15,000 |
| • Corporate Sponsorship | \$1,000 - \$2,000 |



Needs from Council



- Approval in principal for the project.
- Choose and approve site.
- \$200,000 for build less all fundraising.
- 6 outdoor pickleball courts
- Move forward with fundraising and applications for grants.
- Complete build by 2024.
- Stop gap area to play until the facility is built.
 - 4 Temporary courts behind DC in the parking lot
 - Line all tennis courts with equitable sharing of the courts for all.





Legend

- Ferry
- Provincial Highway
- County Road
- Municipal or Other Road
- Bridge reconstruction
- Municipal or Other Road
- Bridge Detour
- OBM Building Location
- OBM Building Footprint
- Building Footprint
- Body of Water
- Evaluated Wetland
- Watercourse
 - Permanent Stream
 - Intermittent Stream
- Road Centrelines
- Road Allowance and Right-of-Way
 - Private Road Allowance
 - Right-of-Way
 - Road Allowance or Condo Road
 - Unopened Road Allowance

Notes





Legend

- Ferry
- Provincial Highway
- County Road
- County Road
- Bridge reconstruction
- Municipal or Other Road
- Municipal or Other Road
- Bridge Detour
- OBM Building Location
- OBM Building Footprint
- Building Footprint
- Body of Water
- Evaluated Wetland
- Watercourse
- Permanent Stream
- Intermittent Stream
- Road Centrelines
- Road Allowance and Right-of-Way
- Private Road Allowance
- Right-of-Way
- Road Allowance or Condo Road
- Unopened Road Allowance

Notes





Legend

- Ferry
- Provincial Highway
- County Road
 - County Road
 - Bridge reconstruction
- Municipal or Other Road
 - Municipal or Other Road
 - Bridge Detour
- OBM Building Location
- OBM Building Footprint
- Building Footprint
- Body of Water
- Evaluated Wetland
 - Watercourse
 - Permanent Stream
 - Intermittent Stream
- Road Centrelines
 - Road Allowance and Right-of-Wa
 - Private Road Allowance
 - Right-of-Way
 - Road Allowance or Condo Road
 - Unopened Road Allowance

1: 2,500

0.1 0 0.06 0.1 Kilometers

NAD_1983_UTM_Zone_17N
© 2022 County of Bruce

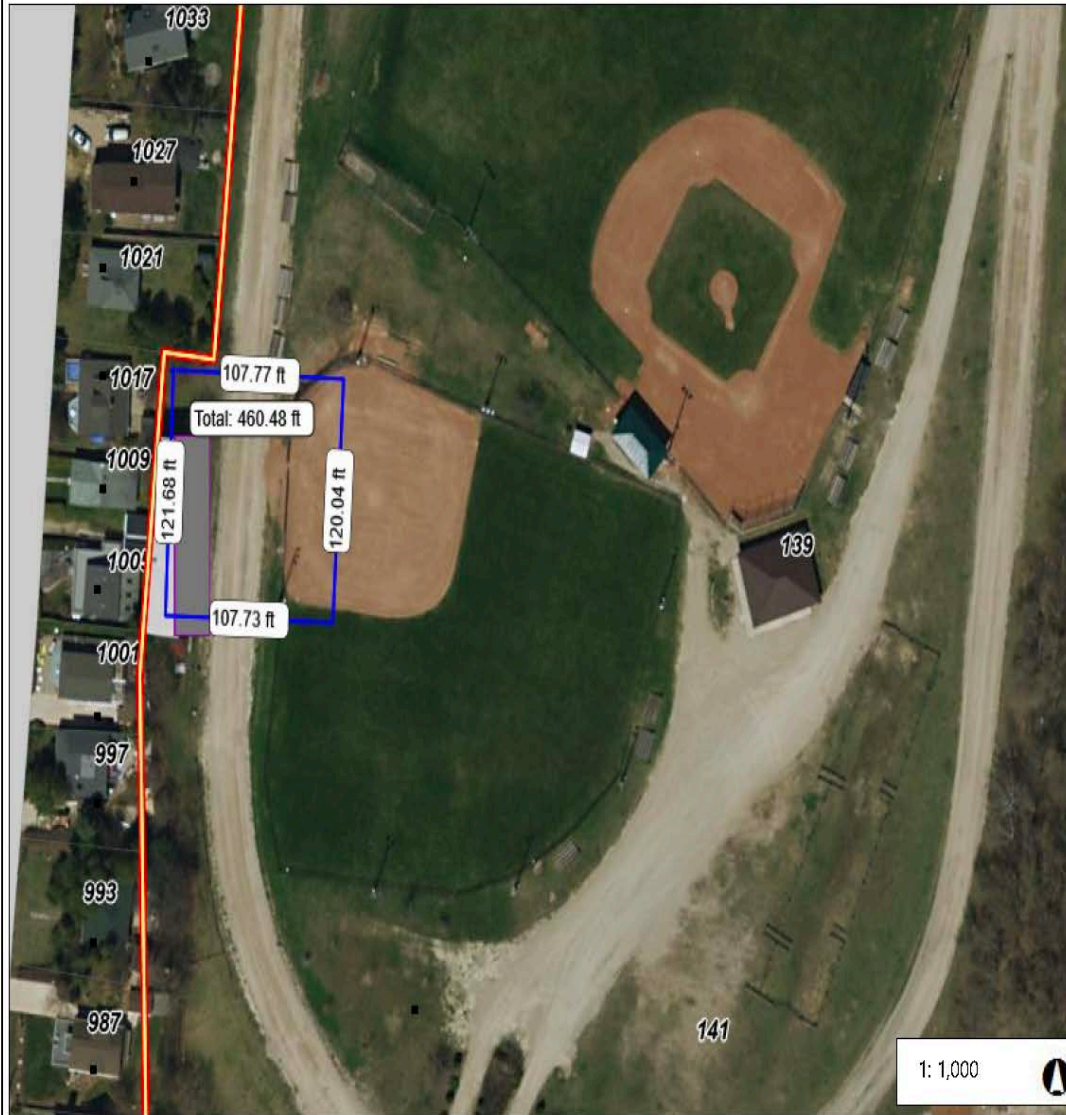
This map is a user generated static output from an Internet mapping site and is for reference only. Data layers that appear on this map may or may not be accurate, current, or otherwise reliable.

THIS MAP IS NOT TO BE USED FOR NAVIGATION

Notes



Connaught Park Locations

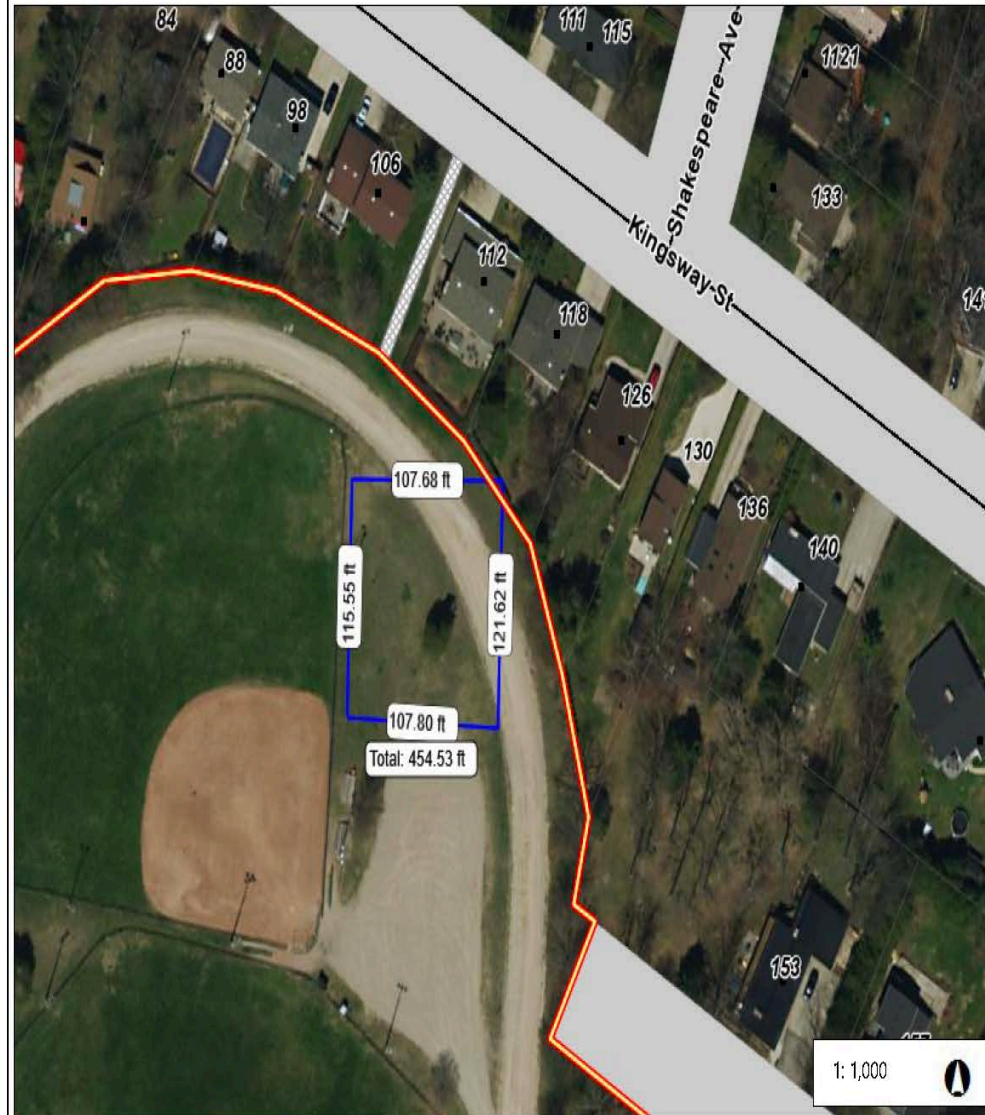


1: 1,000

0.1 0 0.03 0.1 Kilometers

NAD_1983_UTM_Zone_17N
© 2022 County of Bruce

This map is a user generated static output from an Internet mapping site and is for reference only. Data layers that appear on this map may or may not be accurate, current, or otherwise reliable.
THIS MAP IS NOT TO BE USED FOR NAVIGATION



1: 1,000

0.1 0 0.03 0.1 Kilometers

NAD_1983_UTM_Zone_17N
© 2022 County of Bruce

This map is a user generated static output from an Internet mapping site and is for reference only. Data layers that appear on this map may or may not be accurate, current, or otherwise reliable.
THIS MAP IS NOT TO BE USED FOR NAVIGATION

Legend

- Ferry
- Provincial Highway
- County Road
- County Road
- Bridge reconstruction
- Municipal or Other Road
- Municipal or Other Road
- Bridge Detour
- OBM Building Location
- OBM Building Footprint
- Building Footprint
- Body of Water
- Evaluated Wetland
- Watercourse
- Permanent Stream
- Intermittent Stream
- Road Centrelines
- Road Allowance and Right-of-Way
- Private Road Allowance
- Right-of-Way
- Road Allowance or Condo Road
- Unopened Road Allowance

Notes

Questions? / Feedback

